



KARDOLO

BY BEDDINGHOUSE

INSPIRED

by the world of art,
architecture, couture,
nature & design.

Over 25 Years of Timeless Elegance.

For over a quarter of a century, Kardol by Beddinghouse has been synonymous with luxury and sophistication in the world of bed linens. The hallmark of the Kardol bedding collection lies in its rich look and feel, which is achieved through a combination of layered prints and refined details. Each piece is a work of art, carefully crafted to create a harmonious blend of textures and patterns. The result is a bedding collection that transforms any bedroom into a sanctuary of style and comfort.

Inspired by the world of art, architecture, couture, nature and design the duvet covers of Kardol by Beddinghouse get an unique character, offering something to suit every taste and aesthetic preference. Whether you're drawn to delicate floral motifs or subtle geometric motifs, Kardol by Beddinghouse has a print that will capture your heart.



Floral Embrace Blue Green

100% cotton satin

With uni dyed backside

Styled with KAAT Amsterdam

Shari Terra







Runway Green
100% cotton satin

Styled with KAAT Amsterdam
Mandarin Brown



High-quality cotton satin

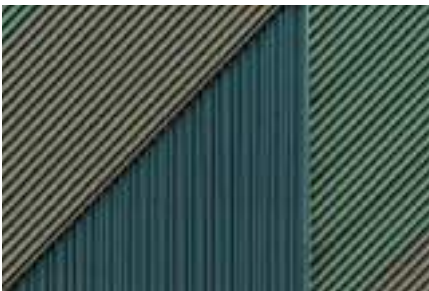
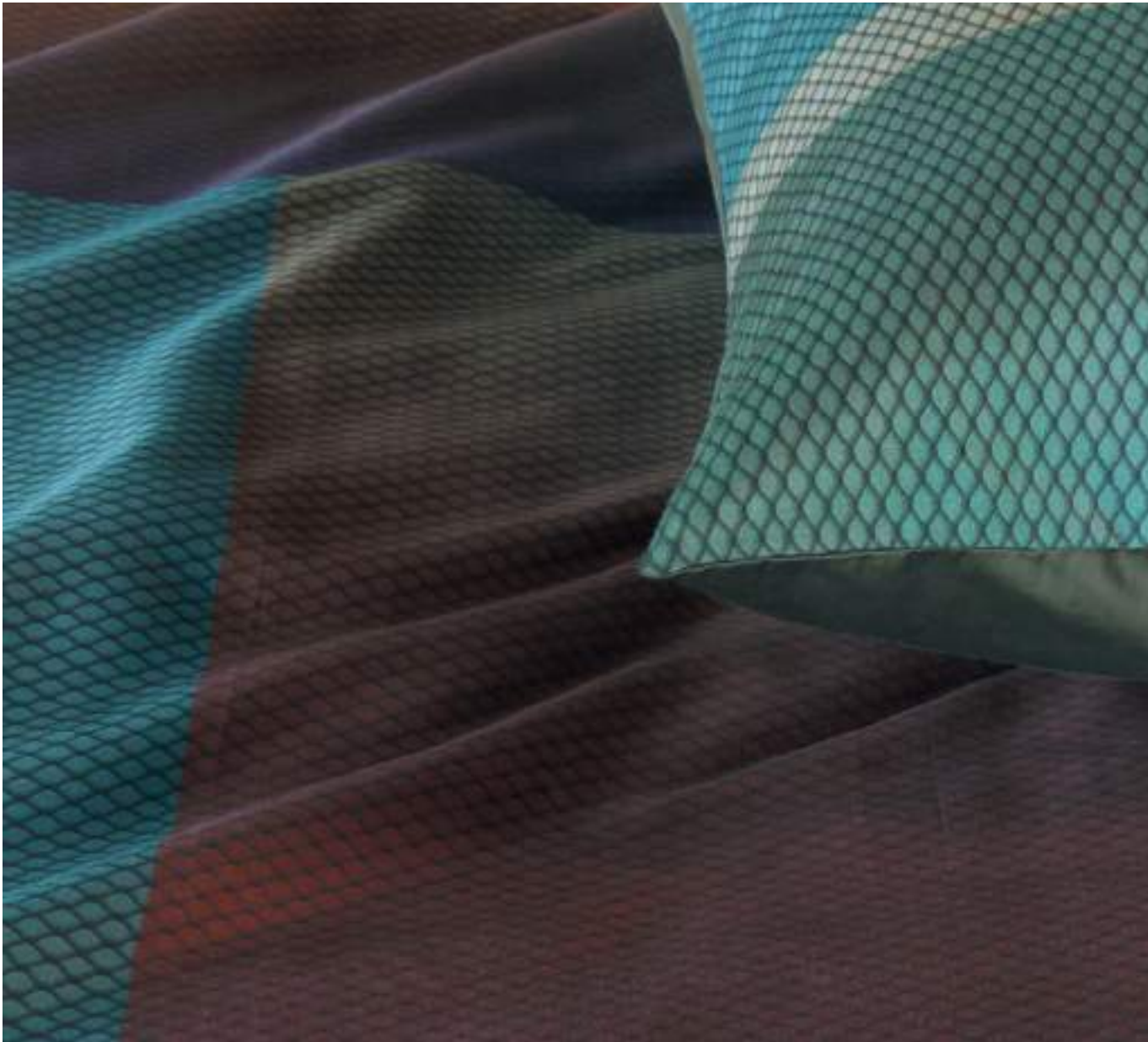
Cotton satin duvet covers are characterized by the use of 100% cotton, a natural product. It is known for its luxurious feel and silky-smooth texture. The fabric is woven using a satin weave, which results in a glossy surface and a supple touch. This makes cotton satin bed linen incredibly soft against the skin.





Facette Blue Green
100% cotton satin

Styled with KAAT Amsterdam
Meja Green



Sloane Square Olive Green
100% cotton satin
With uni dyed backside

Styled with KAAT Amsterdam
Shari Green

Imperial Brown

100% cotton satin

With uni dyed backside

Styled with KAAT Amsterdam
Mandarin Brown & Confer Gold







Chronology Multi
100% cotton satin
With uni dyed backside

Styled with KAAT Amsterdam
Mandarin Purple







Monarch Olive Green

100% cotton satin
With uni dyed backside

Styled with KAAT Amsterdam
Perdy Brown & Confer Gold



Runway Red
100% cotton satin

Styled with KAAT Amsterdam
Shari Terra



Kardol by Beddinghouse

Kardol by Beddinghouse

Aureum Multi

100% cotton satin

With uni dyed backside

Styled with KAAT Amsterdam
Shari Terra & Mandarin Pink







Runway Grey
100% cotton satin



Overview autumn/ winter 2023



Aureum Multi
100% cotton satin
With uni dyed backside



Chronology Multi
100% cotton satin
With uni dyed backside



Facette Blue Green
100% cotton satin



Floral Embrace Blue Green
100% cotton satin
With uni dyed backside



Imperial Brown
100% cotton satin
With uni dyed backside



Monarch Olive Green
100% cotton satin
With uni dyed backside



Runway Green
100% cotton satin



Runway Grey
100% cotton satin



Runway Red
100% cotton satin



Sloane Square Green
100% cotton satin
With uni dyed backside